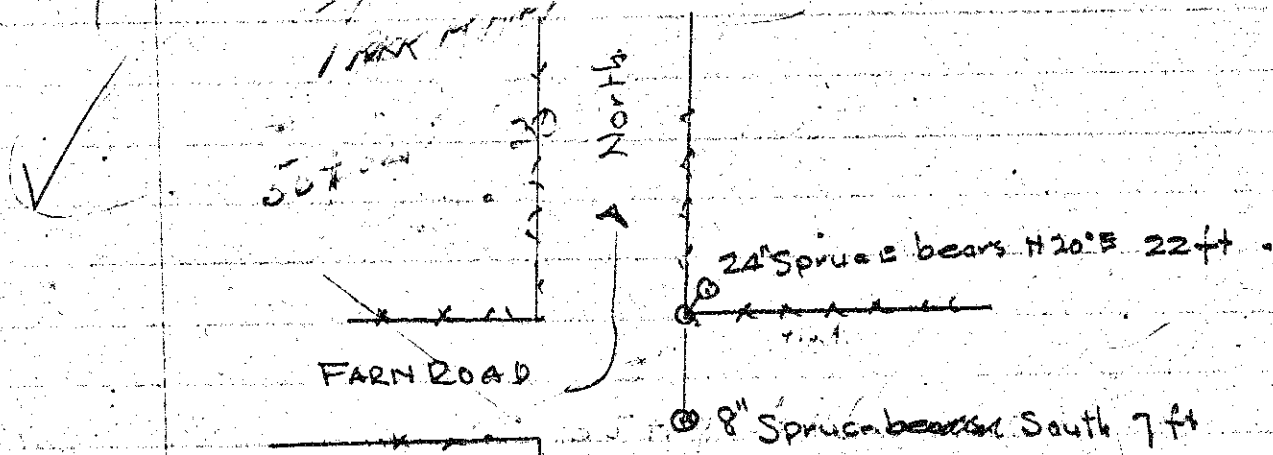


July 30, 1949  
W. E. Anderson Sr.  
W. E. Anderson Jr.

1/4 cor on the North side of Sec. 6 T. 2 S R. 9 W. W. M.

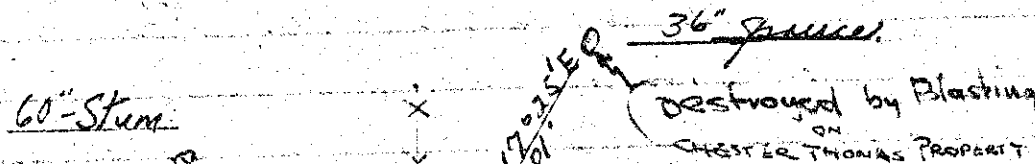


Aug-22-1949

Reset 1/4 between Sec. 11 and 14 T. 1 N R. 10 W.

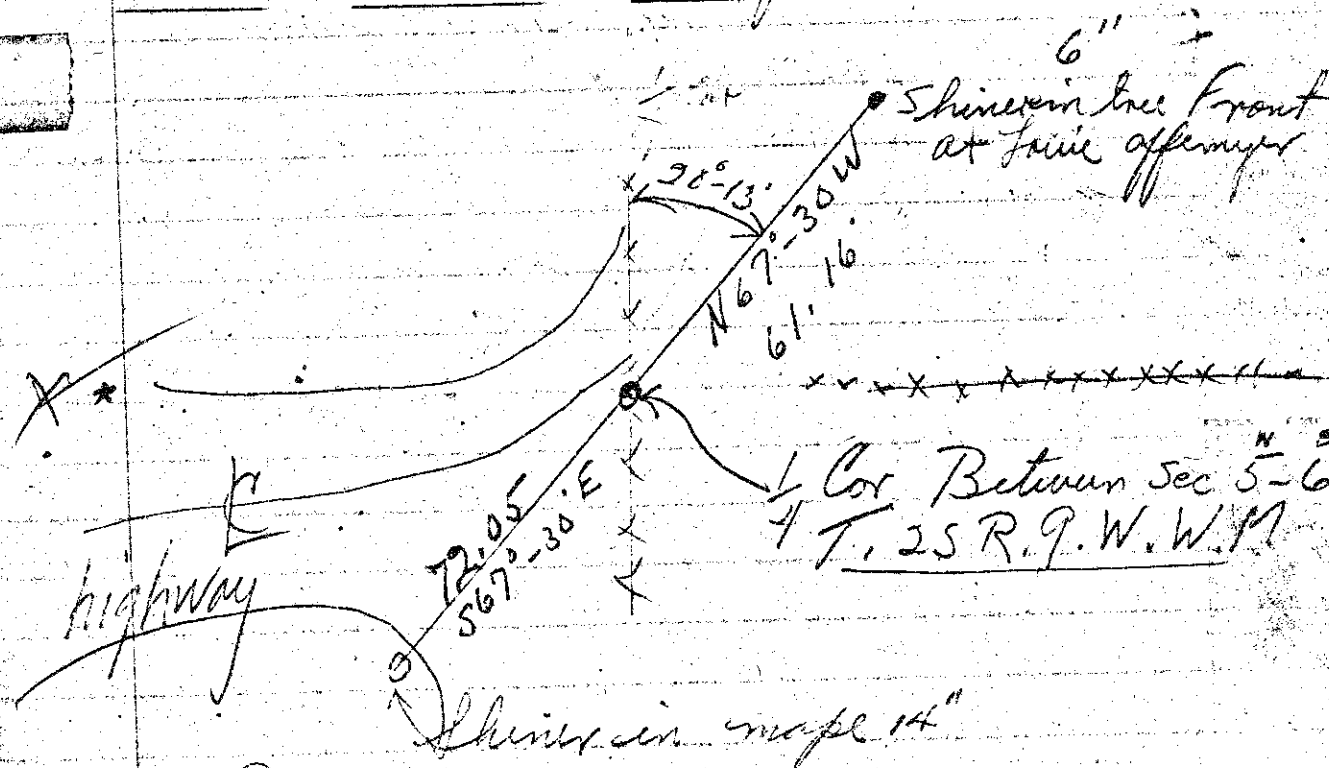
- \* found old B.T. 14" Alder with Mark in Bark
- " " " 16" Hemlock Mark is visible.
- Set New B.T. 18" hem bear. S 38° 0 W 19.2 ft
- " " " 24" hem bear S 42° 0 W 18.0 ft
- Set Spruce limb.

1/4 Cor Witness, on Latimer Road



1/4 Cor Between Sec 18-19  
T. 1 S R. 9 W. W. M.

Aug 1949  
W. E. Anderson Sr.  
W. E. Anderson Jr.



1/4 Cor Between Sec 5-6  
T. 2 S R. 9 W. W. M.

Aug 1949  
W. E. Anderson Sr.  
W. E. Anderson Jr.